

Wireless Outdoor Bell Box (BX-15)

02-Jul-2012

The Outdoor Bell is used to attract attention when alarm signal is received from Control Panel, by activating its siren and strobe light. The BX-15 can also alert you to tamper violation, signal communication problems and low battery status.

1. Mounting Holes x 4

2. Tamper Switch

The tamper switch protects the device from being opened or from being removed from mounting surface.

3. Function Switch Block

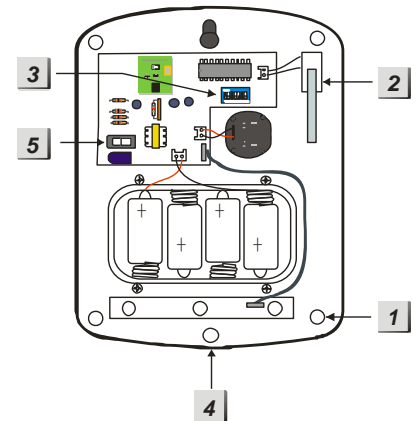
Contains 7 DIP Switches to enable the learning mode and to set the alarm period of siren and strobe light.

4. Securing Screw

To secure the cases from being open.

5. Power Switch

To enable/disable the power supply



Accessories included

In addition to the BX-15 itself, the following accessories are also included in the package:

- a. 4 x large wall plugs.
- b. 4 x 4 mm x 30 mm cross head fixing screws.
- c. 4 x 1.5V D alkaline cells.

DIP Switch Position Table

Remove the cover by unscrewing the single screw located at the bottom. In the middle of the L-shaped PCB board, you can see a Jumper Switch Block which consists of 7 DIP Switches. The function of each DIP Switch is listed as table right.

The DIP Switch is either ON or OFF. Top position indicates ON and bottom position indicates OFF.



SW1		Siren Learning
OFF		Normal operation
ON		Learn-in mode
SW2		Strobe Activation
OFF		only during siren alarm period
ON		until alarm is disarmed
SW3	SW4	Siren Duration
OFF	OFF	3 min.
ON	OFF	5 min.
OFF		10 min.
ON		1 second (test)
SW5		Reserved
SW6		Memory Reset
OFF		Normal
ON		Clear Memory
SW7		Supervision
OFF		Supervision function disable
ON		Supervision function enable

* For further detail please see section **BX-15 Function Overview**.

Power Supply

BX-15 is powered by 4 D-cell alkaline batteries. BX-15 can detect if the battery is low. Low battery detection operates where the BX-15 has enough power to typically operate for 1 month before complete exhaustion. The siren low battery signal will be enunciated by five beeps when arming / disarming.

A low battery signal will be sent to the Control Panel along with regular signal transmissions for the Control Panel to display the status accordingly.

Supervision Function

When the Dip Switch #7 is slid to ON position, BX-15 will conduct a Self-test Periodically by transmitting a supervisory signal once every 30-50 mins in normal operation mode.

If this signal is not received, the Control Panel will indicate on its screen that the particular BX-15 is experiencing an out-of-order problem.

BX-15 Function Overview

● Siren Audible Performance

The siren produces a minimum of 104 dBA sound pressure at 1 meter on axis. It is programmable via two DIP switches (SW3 and SW4) for four different siren durations:

- 1) 3 min.
- 2) 5 min.
- 3) 10 min.
- 4) 1 second (for testing)

- The fourth position (1 second) is used for testing during installation.
- For Burglar / Panic Alarm, BX-15 gives a continuous alarm sound.
- For Fire / Water alarm, BX-15 gives an intermittent alarm sound of 2-sec siren followed by a 1 sec interval, cyclically during the programmed alarm duration.
- The siren is silenced when either the programmed siren duration expires or the Control panel turns off the siren.

● **Strobe (LED) Light**

The strobe light will flash to indicate various system statuses and can be programmed by SW2 as shown in DIP Switch table. It will be turned off either when the programmed siren duration has expired or the panel resets the system.

- When the SW #2 is in ON position:
 - (i) In Arm mode, after the Siren stops sounding, the Strobe Light will still be ON until the system has been disarmed.
 - (ii) In Disarm mode, after the Siren stops sounding, the Strobe Light will be turned off.
- When the SW #2 is in OFF position, whether in Arm/Disarm Mode, if the Siren stops sounding, then the Strobe Light will be turned OFF.

● **Previous Alarm Warning**

If there has been an alarm while you were away, the BX-15 will alarm and display quick flashes for 3 secs when the system has been disarmed.

WARNING: If the siren is activated for 3 seconds when you disarm your system, this suggests that there could be an intruder still in your premises.

● **Audio & Visual Status Indication**

While arming / disarming the system, the BX-15 uses different methods to distinguish various statuses for the user, as listed in following table:

<NOTE>

☞ For those marked with asterisk (*), it means the Siren Audio indication will be effected by the Confirmation ON / OFF. When setting Confirmation to OFF, the confirmation sound will not be available.

	Siren Audio	Strobe light indication
Arm/Home	1 beep*	3 LED flashes at once
Disarm	2 beeps*	Sequentially flashes for 1 cycle
Arm (Low Battery)	5 beeps	3 LED flashes for three times
Disarm (Low Battery)	5 beeps	Sequentially flashes for 2 cycles
Arm (Tamper)	5 beeps	3 LED flashes for three times
Disarm (Tamper)	2 beeps*	Sequentially flashes for 2 cycles
Previous alarm warning	3 secs beep	Sequentially flashes for 2 cycles
Tamper Alarm	Continuous beeps	Sequentially flashes
Entry/Exit Sound	Count-down beeps	None

● **Factory reset**

The siren can be reset and memory contents cleared by following steps:

Step 1: First, put the Control Panel into the programming mode to delete the learn-in BX-15. Refer to the operation manual of your Control Panel for details.

Step 2: Open the top case of BX-15.

Step 3: Slide the power switch to Off position, and then press the tamper switch once for discharging.

Step 4: Set DIP SW 6 to ON position and put the power switch to ON position. The siren will produce a short confirmation tone.

Step 5: The DIP SW 6 should then be set to OFF position. The BX-15 returns to normal mode.

Getting Started & Programming BX-15 into Control Panel

You can learn BX-15 into Control Panel via Configuration Webpage (IP Control Panel) or Programming Mode.

1. Learning the BX-15 into Control Panel Via Configuration Webpage

2 ways are provided to learn BX-15 into the Control Panel.

Way 1:

Learning the BX-15:

Step 1: Release the screws at the bottom of BX-15 and pull the outer case out carefully. Locate the Function Switch Block.

Step 2: Use a sharp subject to slide Dip SW3 & SW4 on BX-15 function switch block for your desired alarm period.

Step 3: Put the Control Panel into the learning mode.

Step 4: Slide Dip SW1 on the BX-15 function switch block to ON position. BX-15 LED 1 & 3 flash once with a short beep. The BX-15 is now in learning mode. 3 seconds later, BX-15 sends out a learning code. BX-15 LED 1 & 2 & 3 flash once to indicate.

Step 5: If the Control Panel doesn't receive a learning code, slide Dip SW1 back to OFF and then ON position to enable BX-15 to enter the learning mode again. BX-15 LED 1 & 3 flash once with a short beep. 3 seconds later, BX-15 will send out a learning code again. BX-15 LED 1 & 2 & 3 flash once to indicate.

Step 6: If the Control Panel receives the learning code, it will list the sensor information on the webpage. Press **Add** on the webpage to confirm and then you are required to select operation area for the BX-15.

- The area selection is BX-15's operation area. No matter which operation area the BX-15 is assigned to, it raises an alarm when any sensor either in Area 1 or Area 2, is triggered.

Step 7: Enter the zone number and zone name and then press OK key on the webpage to confirm. An acknowledgement will be sent to BX-15. When the acknowledgment is received, the BX-15 sounds a short beep with LED 1&3 flashing once to indicate that learning process is successful.

<NOTE>

☞ If the learning process fails, please remove the BX-15 learning memory from the control panel and repeat the step 3-7 again.

Step 8: Slide Dip SW1 on the BX-15 to OFF position. The BX-15 leaves learning mode. If you don't slide Dip SW1 back to OFF position, the BX-15 will automatically leave the learning mode one hour after it enters the learning mode.

Way 2:

Learning the BX-15:

Step 1: Release the screws at the bottom of BX-15 and pull the outer case out carefully. Locate the Function Switch Block.

Step 2: Use a sharp subject to slide Dip SW3 & SW4 on BX-15 function switch block for your desired alarm period.

Step 3: Slide Dip SW1 on the BX-15 function switch block to ON position. BX-15 LED 1 & 3 flash once with a short beep. The BX-15 is now in learning mode.

Step 4: Get into the Control Panel's configuration webpage and get into the **Add Sensor** section. Select operation area for the BX-15.

- The area selection is BX-15's operation area. No matter which operation area the BX-15 is assigned to, it raises an alarm when any sensor either in Area 1 or Area 2, is triggered.

Step 5: Enter the BX-15's ID code and the sensor name and then press OK to confirm the settings.

Step 6: If the learning process is successful, the webpage will display the learn-in sensor information on the **Panel Condition** section.

<NOTE>

☞ If the learning process fails, please remove the BX-15 learning memory from the control panel and repeat the step 4-6 again.

Step 7: Slide Dip SW1 on the BX-15 to OFF position. The BX-15 leaves learning mode. If you don't slide Dip SW1 back to OFF position, the BX-15 will automatically leave the learning mode one hour after it enters the learning mode.

Programming the BX-15:

☞ Before you program the BX-15, you should check whether the system is in the area where the BX-15 has been learnt-in.

Step 1: Connect the Control Panel to the webpage and then get into the **"Program Siren"** mode.

Step 2: Make sure the BX-15 is in the normal operation mode.

Step 3: Set the "Siren Tamper", "Confirm" and "Entry Sound" to ON or OFF at your discretion and then click on those functions' correspondent radio buttons accordingly.

Siren Tamper

- If it is set to **"ON"**, the BX or SR siren will alarm when the tamper switch is triggered.

- If it is set to **"OFF"**, the BX or SR siren will remain silent when the tamper switch is triggered.

<NOTE>

☞ If the siren tamper is set as disabled (**OFF**), it will automatically revert to enable (**ON**) after about an hour if it is not switched back manually.

Confirm

- If it is set to **"ON"**, the BX or SR Siren will sound beeps when the system is armed or disarmed.

- If it is set to **"OFF"**, the BX or SR Siren will remain silent when the system is armed or disarmed.

Entry Sound

- If it is set to **"ON"**, the BX or SR Siren will sound beeps when the Entry timer is activated.

- If it is set to **"OFF"**, the BX or SR Siren will remain silent when the Entry timer is activated.

Step 4: Press Ok and then a short beep will be heard to indicate that the programming is successful.

2. Learning the BX-15 into Control Panel via Programming Mode

Learning the BX-15:

Step 1: Release the screws at the bottom of BX-15 and pull the outer case out carefully. Locate the Function Switch Block.

Step 2: Use a sharp subject to slide Dip SW3 & SW4 on BX-15 function switch block for your desired alarm period.

Step 3: Put the Control Panel into **Device +/-** menu and select the **Add Devices** sub menu (See operation manual of Control Panel).The screen on Control Panel shows **"*Push button on Device to add*"**.

Step 4: Slide Dip SW1 on the BX-15 function switch block to ON position. BX-15 LED 1 & 3 flash once with a short beep. The BX-15 is now in learning mode. 3 seconds later, BX-15 sends out a learning code. BX-15 LED 1 & 3 flash once to indicate.

Step 5: If the Control Panel doesn't receive a learning code, slide Dip SW1 back to OFF and then ON position to enable BX-15 to enter the learning mode again. BX-15 LED 1 & 3 flash once with a short beep. 3 seconds later, BX-15 will send out a learning code again. BX-15 LED 1 & 2 & 3 flash once to indicate.

Step 6: If the Control Panel receives the learning signal, the screen displays **"Detected: (OK?) BX-15"**. Press OK key on the panel to confirm and then you are required to select operation area for the BX-15. Options available are **single area** and **whole system**.

- Single area means that the BX-15 raises an alarm only when the sensor, which is learnt in this area, is triggered.
- Whole system means that the BX-15 raises an alarm when any sensor, which is learnt in either Area 1 or Area 2, is triggered.

Step 7: Select either Single Area or Whole system, enter the zone number and zone name and then press OK key on the panel to confirm. An acknowledgement will be sent to BX-15. When the acknowledgment is received, the BX-15 sounds a short beep with LED 1&3 flashing once to indicate that learning process is successful.

<NOTE>

☞ If the learning process fails, please remove the BX-15 learning memory from the control panel and repeat the step 3-7 again.

Step 8: Slide Dip SW1 on the BX-15 to OFF position. The BX-15 leaves learning mode. If you don't slide Dip SW1 back to OFF position, the BX-15 will automatically leave the learning mode one hour after it enters the learning mode.

Programming the BX-15:

☞ Before you program the BX-15, you should check whether the system is in the area where the BX-15 has been learnt-in.

☞ During the learning process (above step 6), if **Single Area** is selected, the BX-15 only can be programmed in the pre-learnt area. However, if **Whole system** is selected, the BX-15 can be programmed either in area 1 or area 2.

Put the Control Panel into **Device +/-** menu and select the **Program Siren** sub menu (See operation manual of Control Panel), you can find the following selections:

1) Siren Tamp. Off/On (Siren Tamper Off/On)

- BX-15 is protected against any attempt to open the lid or to detach BX-15 from its mounting surface.
- If the siren detects a tamper condition it will activate the siren & strobe light for the programmed alarm period. A tamper signal will be sent to the Control Panel along with regular signal transmissions for the Control Panel to display the status accordingly. If the tamper condition persists, the siren will sound a series of five beeps either every time the system is armed or when the tamper is enabled, to indicate a fault.
- Tamper feature can be disabled by selecting **Siren Tamp. Off**. The BX-15 temporarily stops the tamper detection for one hour (especially designed for replacing battery). After one hour, the BX-15 tamper automatically revert to **On** even if it is not switched back.
- Tamper feature can be enabled by selecting **Siren Tamp. On**. The BX-15 enables its tamper protection.

2) Confirm Off/On (Confirmation Off/On)

- The selections are used to enable or disable whether BX-15 plays confirmation beeps while system is armed or disarmed.

3) Entry Snd Off/On (Entry Sound Off/On)

- The selections are used to enable or disable whether BX-15 plays counting-down beeps during the entry delay period.

<NOTE>

☞ When any of the Siren Tamp. Off/On, Confirm Off/On or Entry Snd Off/On is selected and press OK key on the panel, the BX-15 sounds a beep to indicate the setting success.

Installing BX-15

The tamper switch plunger protrudes through the back of the unit, so that if the siren is pulled off from the wall, the alarm will be activated. Ensure it is fully depressed when the siren is mounted. If there is a gap, pack with a suitable spacing material.

Step 1. Find the location where BX-15 is to be mounted.

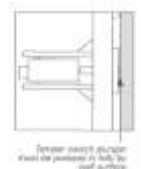
Step 2. Using the large screws and wall plugs provided, mount on wall through the 4 x mounting holes.

Step 3. Fix the siren cover with the securing screw.

Step 4. Enable tamper switch by selecting the tamper enable/disable menu on the Control Panel (please refer to the Manual of Control Panel for details).

Step 5. Check if the installation is successful by testing from the Control Unit by arming and disarming function.

Successful arming/disarming is indicated by the table provided in **Audio & Visual Status Indication**.



<NOTE>

☞ If 5 short-beeps are noticed while arming, it means the tamper is not correctly set. Check to ensure that tamper is properly set and then test from Control Unit again.

Step 6. The installation is now completed.

Changing the Battery

Step 1: Get into the Control Panel's programming mode to disable the Siren Tamper function and then press the OK key on the Control Panel (please refer to the Manual of Control Panel for details). The BX-15 will sound a beep to indicate the tamper is closed.

Step 2: Release the screws at the bottom of BX-15 and pull the outer case out carefully.

Step 3: The battery compartment is a large box in the BX-15 with a lid secured with 4 screws.

Step 4: Remove the four screws and take off the compartment lid.

Step 5: Remove the old batteries and press the Tamper Switch twice to discharge.

Step 6: Insert the new D cell alkaline batteries into the battery compartment, carefully to put the batteries in the right way around.

Step 7: The BX-15 will emit beeps and flash when the last battery is inserted.

Step 8: Replace the battery compartment lid with the four screws taking care not to over tighten.

Step 9: Put the Control Panel into the programming mode again to enable the Siren Tamper function again and then press **OK** key. The BX-15 will sound a beep to indicate the tamper is opened.